



# ARRL Field Day 2023

---

CHAD CONE - KY4KP - FIELD DAY CHAIRMAN

MARTIN BUEHRING – KB4MG – CLUB PRESIDENT

# Requested Registration

---

- Fill out the forms provided by us so we know who is coming
- We will tell you what you can bring later in this presentation.
- Let us know what you want to do on Field Day
- Sign up for Workshops
  - Soldering on PCB's (space limited to 20)
  - WinLink RF with FLDIGI



# Field Day 2022 – Major Roles

---

**GOAL:** Successful Field Day that will be enjoyed by all the participants

Planning makes all the difference. Thanks to those who participated the planning process!

## Major Roles

Field Day Chairman – Chad Cone KY4KP

Hospitality Committee - James James KE4HMS + Team of 5

Antenna Planning – Chad Cone KY4KP, Stan Ham WB9GFA

Site Planning Committee – Tom Perry KN4LSE, Jay Street K4QEX

Logistics & Station Operations – Rod Atwell KO4PWB, Bill Sangster KO4UQF

Safety Officers – Bruce Barkley K4OTX, David Landers KA4SAO, Jim Stevens KJ4QVT

First Aid - Rob Bruderer W1JKU

Photography – Rob Bruderer + Everyone



# A word for new hams and new to FD

- THIS is a premiere learning experience where you can learn more in one day than from reading many books.
- Ask the questions you have about any aspect of the hobby.
  - PS – we don't know it all, but we will try to help you get the answers
- Expand your horizons beyond what you do today.
- Explore your motivations for Ham Radio
- Get on the air! You will enjoy it.



# Soldering Workshop

Learn basic soldering on a printed circuit board made especially for this workshop.

The Circuit needs to work to be successful!

Mix of thru-hole and surface mounted parts

**Taught by Tom Perry (KN4LSE)**

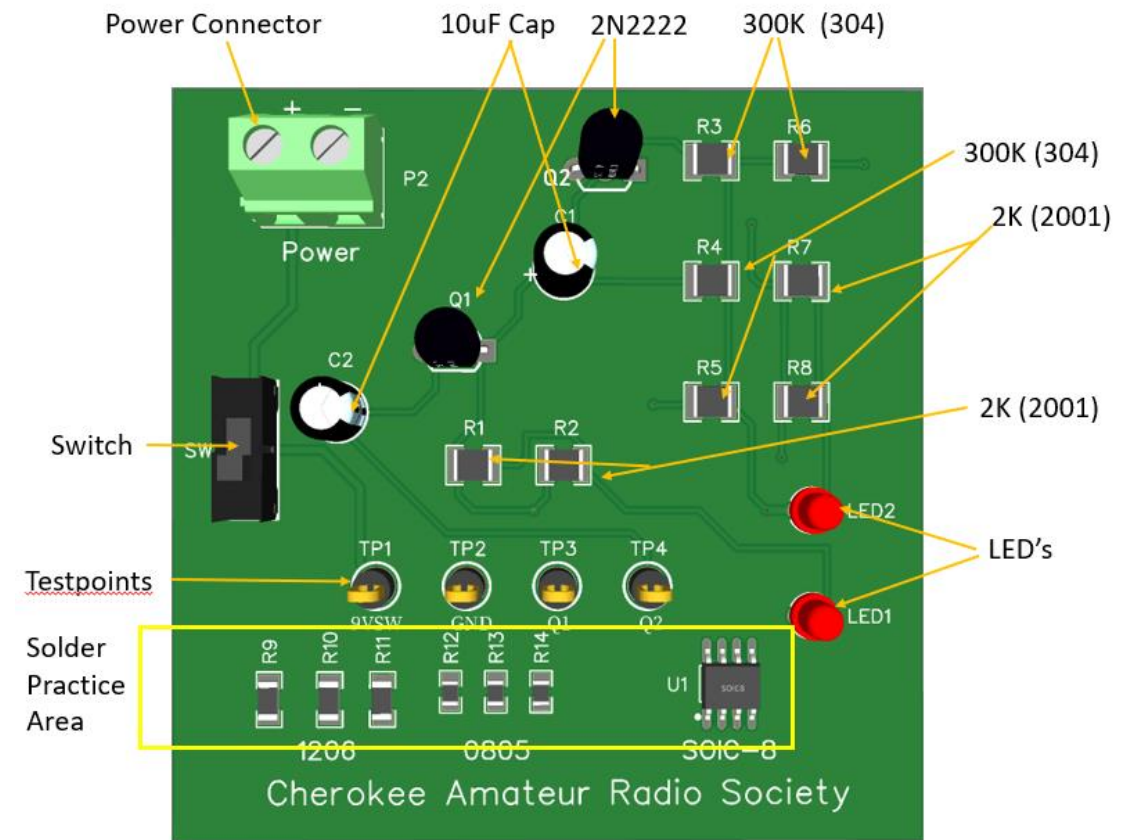
Tom was an engineering technician for Georgia Tech Research Institute

We can accommodate a maximum of 20

- 10 people per session, 2 sessions

Cost is \$10 per kit to cover parts and PCB

**MUST** bring your own 9Volt Battery



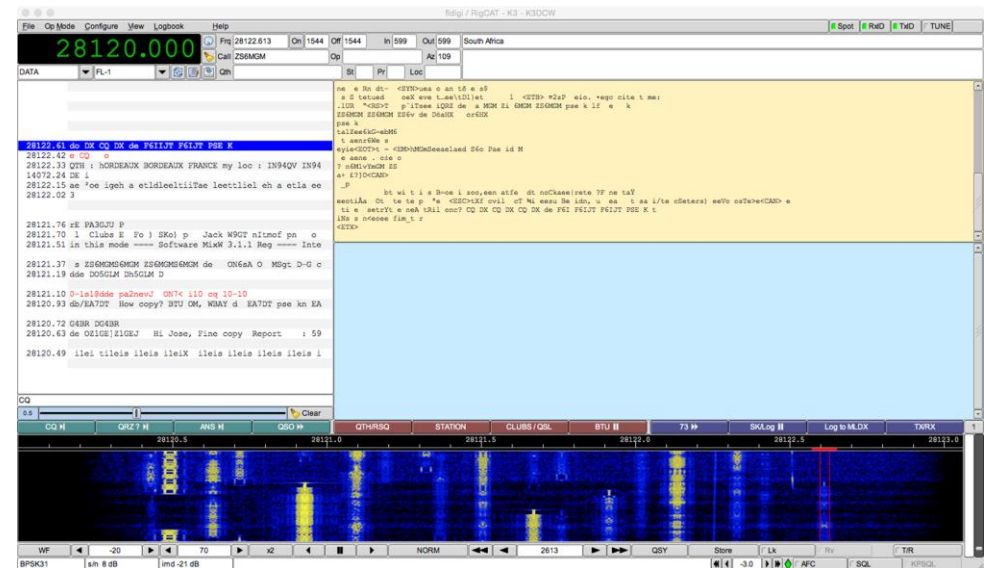


# WinLink RF and FLDIGI Workshop

Taught by Rob Bruderer – W1JKU

Workshop covers the download, install, and configuration of software for WinLinkRF as well as for FLDIGI modes.

Bring your laptop computer and radio, if possible.



# Field Day Raffle

---

We will have a raffle for a Yaesu FTM-200DR 144/440 Digital Transceiver.

You must be present at Field Day to enter and win!

**The prize is courtesy of our sponsor:  
ENT of GA North- Dr. Athavale.**

**Thank you!**



# Field Day Logistics



# Site Rules

---



You **must sign in** as a participant for Field Day to operate any stations –Sign In List will be onsite the day of the event at the Help Desk.

**We have a specific setup plan for the site. Don't set up anything without coordinating with Chad or Tom.**

**Reserve operating time** on the operators white boards, and be there on time.

**Do not** change the band or mode of a station without consulting the band coordinator ( Chad Cone KY4KP).

If you leave the site, let us know, so we are not looking for you.

Have an HT that functions on UHF Simplex , for onsite communications – 443.075MHz Simplex mode

**Be Flexible and courteous** – We may ask you to do something where we need your helping hands.

**No Alcoholic beverages** allowed at the site. **No smoking** in the barn. Any smokers use outside areas.

# CARS Operations Overview

---

**Location** : Rob Long Family Farm – Taylorsville, GA ( near Cartersville on Hwy 113)

**Entry Category** : **6 Alpha** under call sign **K4R** , except for GOTA station – **WX4CAR** - club call

**Advance Team** – Friday, June 23 at 1PM at the site – Antenna rigging and tuning and setup

**Setup** – Saturday, June 24 at 0800 , to be completed by 1200 hours

- Antenna final tuning
- Final Setup for tables, chairs, lighting, etc
- All transmitters, antennas, and equipment used must be within a circle 1000 feet in diameter
- Food or non-transmitter related things can be outside the circle.
- Banners and other collateral for the visitors at the most visible spots

**Briefing** - Saturday at 1200 hours – Rules and operations, N3FJP training, Safety Briefing

**Tear down** – Sunday afternoon ~12 noon or 1pm . We really need help with this, so please plan to be there.



# Radio Operations

---

- Each Station has a Captain. Any questions ask them.
- Respect the equipment! It is expensive and on loan from it's owner.
- Dedicated Stations on 10,15,20,40, and 80 meters running various modes.
  - Modes are assigned
  - Do not change bands!
- GOTA Station will run 20 meters and 2 meters



# On-air Operations Rules



- ✓ Please take time read the ARRL Rules for Field Day
  - ✓ Posted in the Field Day section on the ARRL site
- ✓ Each station will have a whiteboard for signing up to run a particular station. More on that on Field Day
- ✓ You will be trained on the N3FJP Logging program.
  - ✓ You can download a copy for free and try it on your own machine before Field Day. ([n3fjp.com](http://n3fjp.com))
- ✓ Operations will run for 24 hours, so there is ample time to get on the air, especially with 6 stations

# Hospitality

---

- **James James (KE4HMS) Team Lead**
- Food and drinks will be provided by the club for:
  - Saturday Lunch and Dinner
  - Sunday Breakfast and Lunch
- Clean-up is your own responsibility
  - Leave the site better than when we arrived



# Overnight stay and campers

---

- Please register your camper with Tom Perry (KN4LSE). (need size info)
- Tom will assign a spot for you based on camper length and needs.
- Follow instructions from the parking team when you arrive in Field Day
- Bunk room is first come-first serve
- You may bring your own gear
  - Small tents, cots, sleeping bag, etc





# What to do when you arrive

---



- ✓ Be sure to sign in on the official log so we credit for your participation with ARRL.
- ✓ Organized chaos is generally the rule. Don't be part of the chaos.
- ✓ Know what you volunteered for. Help where asked to do so.
- ✓ If you are unsure how to do something, ASK us
- ✓ If you need something to do , ASK us
- ✓ If you think something is unsafe, you are probably right. Practice safety first! Talk with the safety officer.
- ✓ Be prepared for the weather and harsh environment, especially rain. We have sufficient cover in the barn.
- ✓ Invite people to visit and experience what we are doing.

# Site Command and Communications

---

- General Site communications please use 443.075 MHz SIMPLEX
  
- Talk-in frequency – KG4VUB 145.270 Mhz , PL 100 (-offset)



# Cell phones and WiFi

---

Cell coverage at the site is good for the major carriers. Cell calls should not be any issue.

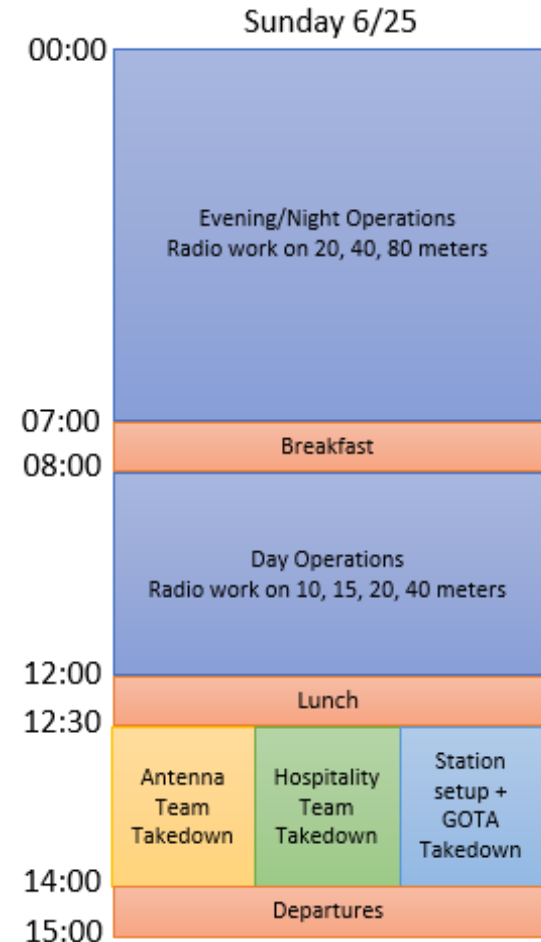
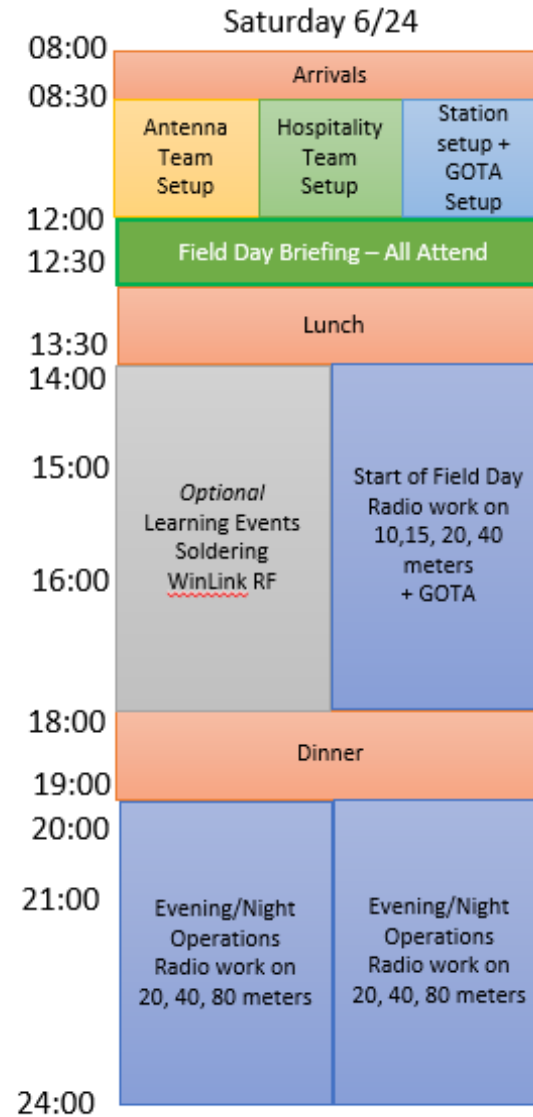
There is WiFi coverage in the barn. Tom Perry (KN4LSE) will provide the SSID and passcode , if you need it.



# Schedule of Events



## Field Day Schedule of Events





# Help Desk

---

## Help/ Answer Desk

Central place to ask any questions that you may have about Ham Radio and/or electronics in general.

Located with the GOTA station and staffed by our seasoned hams throughout the day.



How can we help you?

# Electrical Power plans

---

As an Alpha class (6A) setup, all radios and any computers controlling radios, must be on emergency power, ie generator or battery.

We will need to make 5 or more contacts on battery/solar anytime during Field Day operations.

We will have 2 gasoline generators onsite to accommodate the radios. No other generators are needed or wanted.

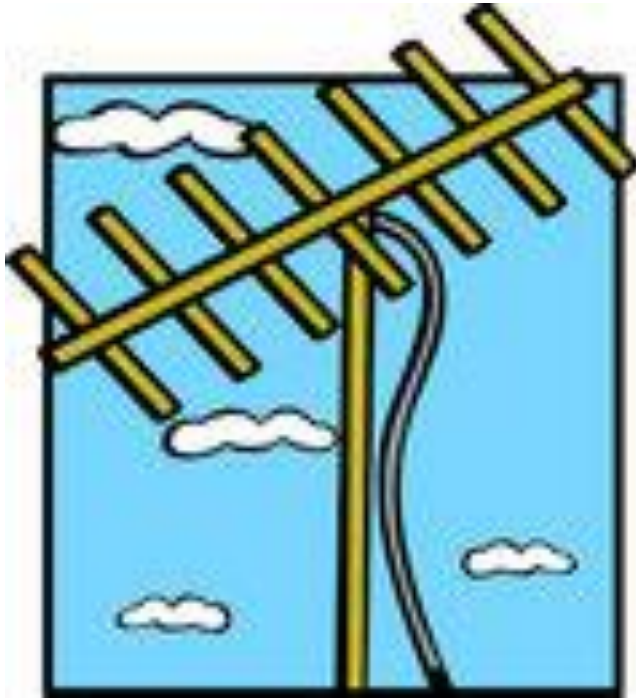
Logging computers and any other personal items like lights, fans, etc can connect to **commercial power**, available throughout the barn.





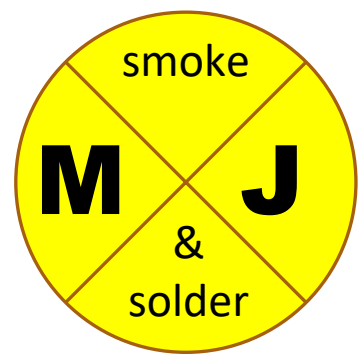
# Antenna Plans

---

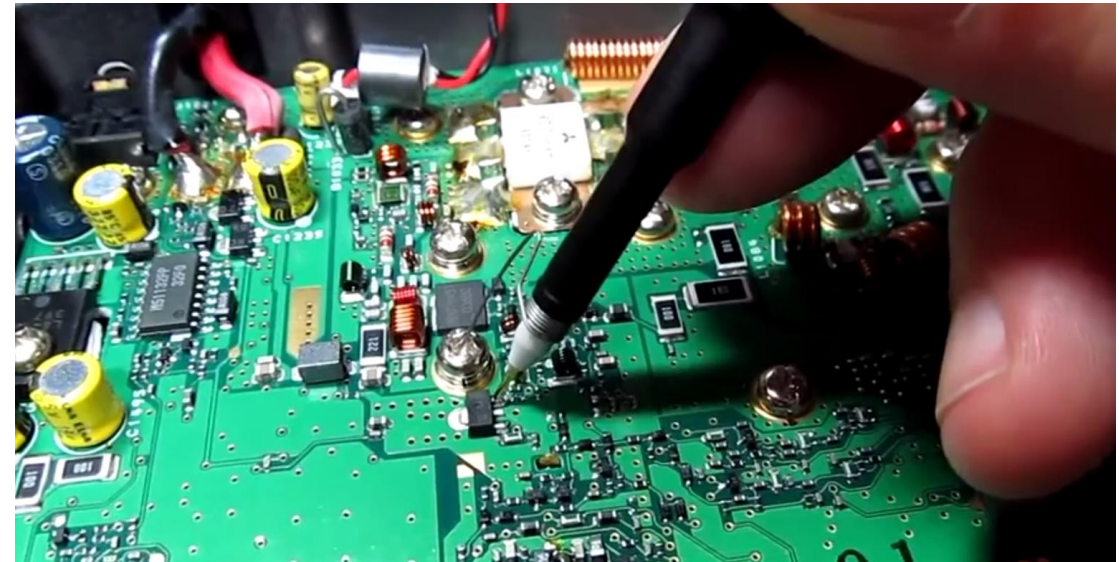


- **DO NOT** bring any antennas to Field Day. We have a master plan we will implement.
- We are using EFHW dipole antennas connected to a special set of boxes and filters that allow multiple stations to share the same antenna without interference.

# Malfunction Junction



- Have a radio that you are not sure how to program?
- Have a piece of gear you need to test or verify proper operation?
- Need help soldering a connector or power pole connection?
- We will try to help you any way we can. Bring that equipment.



# Other Items you can bring

---



© 2008 CNET Networks, Inc.



- ✓ Bring your own Headphones. 1/8" jack will work best.
- ✓ Personal Care items
  - ✓ Insulated water bottle, meds, etc
- ✓ Sleeping gear, if staying the night
- ✓ Personal fan, if you have one
- ✓ A good cheerful, helpful attitude ;>)



# What not to bring to Field Day

---



No alcohol



No weird relatives

**ATTITUDE**  
*is Everything*

No bad attitudes



# Photography

---

Please take pictures! We want to see a variety of activities captured.

SMILE for the camera!

If anyone has a drone for aerial photography, that is welcome as well. (Hint, hint Rob B)



# Friday Advance Team

---

Arrive onsite about noon on Friday the 23<sup>rd</sup>

Primary tasks are setting up antennas, tables, chairs, and other things we need for hospitality.

Plan power connections for stations.

We will set up workshop stations for the soldering class.

There may be some site cleanup and organization to get ready for Saturday



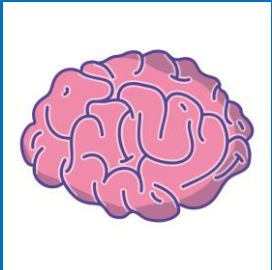


CHEROKEE AMATEUR  
RADIO SOCIETY



## FD 2023

They say you put a new wrinkle in the gray matter of your brain every time you learn something new.



Commit to learning 3 new things this Field Day and add some new wrinkles!

- Come prepared to get the most out of Field Day!
- Commit to learning
  - Learn 3 new things and tell us about them at the meeting in July and on social media
- Share your experiences and ideas with others
- Be sure to GET ON THE AIR!
- **Final questions or concerns?**